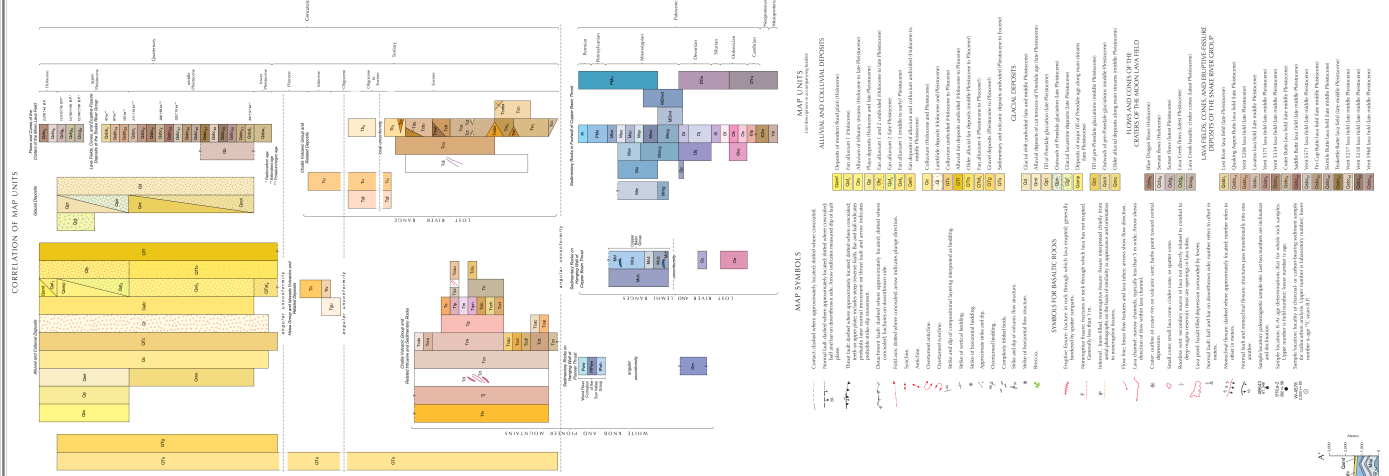
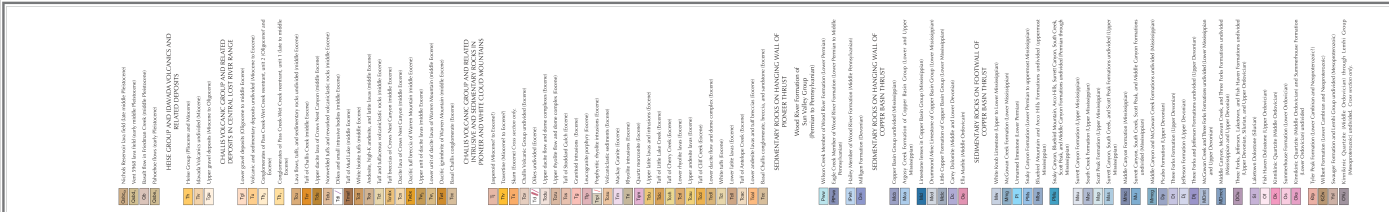
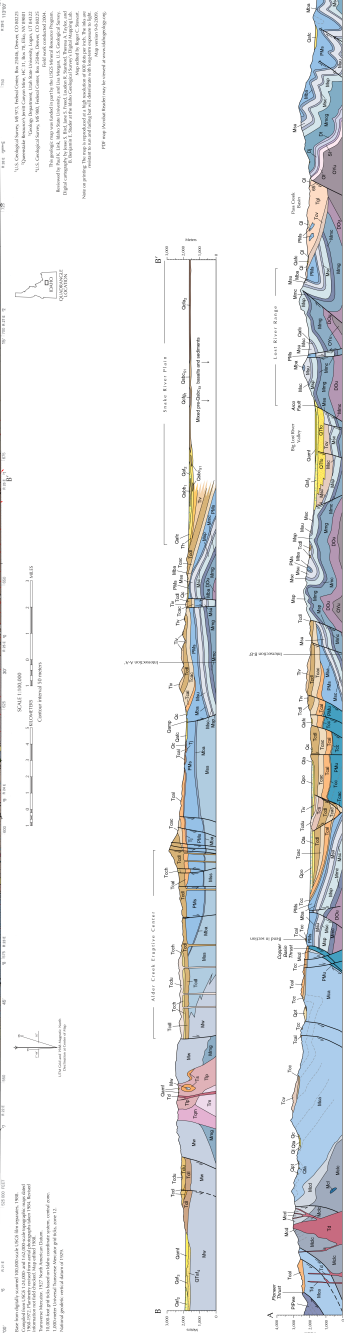
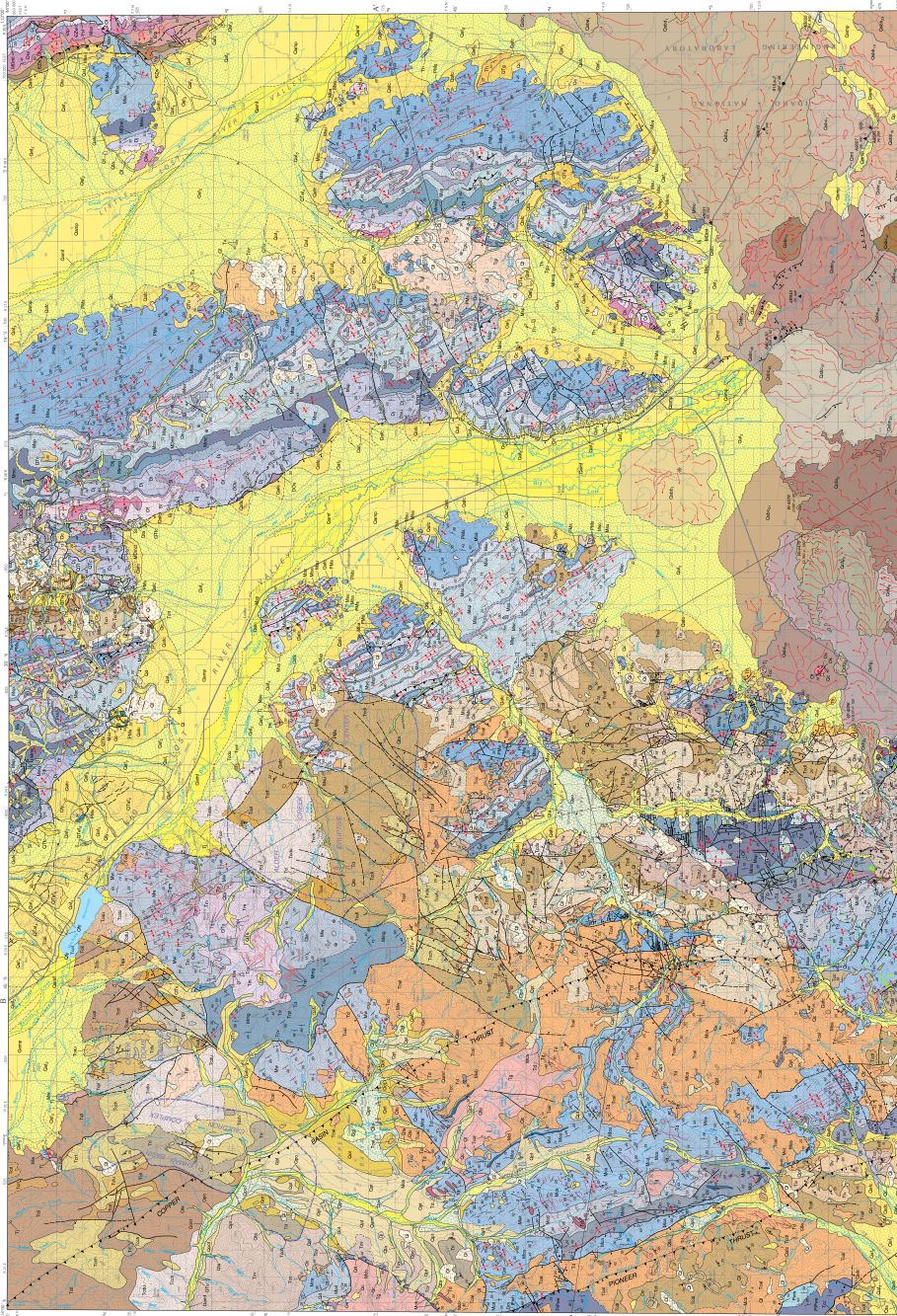


GEOLOGIC MAP OF THE ARCO 30 x 60 MINUTE QUADRANGLE, IDAHO

Betty Skopp¹, Lawrence G. Scudlark², Stephen L. Finckle³, and Mel A. Kurtz⁴
Compiled by Betty Skopp and Mel A. Kurtz

2009



UNIT DESCRIPTIONS:

- 1** Upper Snake River Group (Pliocene to Pleistocene): Includes the Upper Snake River Group, which is a thick sequence of sandstone and siltstone.
- 2** Middle Snake River Group (Pliocene to Pleistocene): Includes the Middle Snake River Group, which is a thick sequence of sandstone and siltstone.
- 3** Lower Snake River Group (Pliocene to Pleistocene): Includes the Lower Snake River Group, which is a thick sequence of sandstone and siltstone.
- 4** Teton Group (Eocene to Oligocene): Includes the Teton Group, which is a thick sequence of sandstone and siltstone.
- 5** Lost River Group (Pliocene to Pleistocene): Includes the Lost River Group, which is a thick sequence of sandstone and siltstone.
- 6** Snake River Plain (Pliocene to Pleistocene): Includes the Snake River Plain, which is a thick sequence of sandstone and siltstone.
- 7** Teton Range (Eocene to Oligocene): Includes the Teton Range, which is a thick sequence of sandstone and siltstone.
- 8** Lost River Range (Pliocene to Pleistocene): Includes the Lost River Range, which is a thick sequence of sandstone and siltstone.

MAP SYMBOLS:

- Faults:** Normal faults (dashed line), Thrust faults (solid line with teeth), Strike-slip faults (dashed line with perpendicular ticks).
- Folds:** Anticline (dashed line with outward ticks), Syncline (dashed line with inward ticks).
- Other Features:** Canyons (dashed line with inward ticks), Plateaus (dashed line with outward ticks).

UNIT DESCRIPTIONS (continued):

- 9** Snake River Group (Pliocene to Pleistocene): Includes the Snake River Group, which is a thick sequence of sandstone and siltstone.
- 10** Teton Group (Eocene to Oligocene): Includes the Teton Group, which is a thick sequence of sandstone and siltstone.
- 11** Lost River Group (Pliocene to Pleistocene): Includes the Lost River Group, which is a thick sequence of sandstone and siltstone.
- 12** Snake River Plain (Pliocene to Pleistocene): Includes the Snake River Plain, which is a thick sequence of sandstone and siltstone.
- 13** Teton Range (Eocene to Oligocene): Includes the Teton Range, which is a thick sequence of sandstone and siltstone.
- 14** Lost River Range (Pliocene to Pleistocene): Includes the Lost River Range, which is a thick sequence of sandstone and siltstone.